



Chelsea Botanica, Fulham
London SW6

GARTONJONES.COM



Chelsea Botanica, Fulham London, SW6

GARTON JONES.COM

11 Park Street
Chelsea Creek
London
SW6 2FS

Sales +44 (0) 20 7824 7090
paul@gartonjones.com
www.gartonjones.com

£820,000 Leasehold

An opportunity to purchase this BRAND NEW two-bedroom apartment 863sqft (80.2sqm) which forms part of this brand new and highly desirable development Chelsea Botanica. The stunning apartment will be finished to a high specification and comprises of an open plan lounge and modern kitchen, access to the balcony with south facing views, two bedrooms with the master benefitting from an ensuite, family bathroom. The apartment benefits from fitted wardrobes to both bedrooms, storage cupboard, zoned underfloor heating & comfort cooling. Chelsea Botanica offers an exclusive collection of 133 boutique residences, ideally positioned just moments from the River Thames and Imperial Park. Residents will enjoy privileged access to a wide array of thoughtfully selected amenities designed to enhance their lifestyle and well-being. Among these is entry to private gardens, developed in collaboration with the Royal Botanic Gardens, Kew. Residents also gain membership to The Atelier Club, featuring a 24-hour concierge service, a resident's lounge, co-working spaces, and a cutting-edge fitness suite in partnership with Peloton.

** images used are library photos of the development **

** This is a Contract reassignment & would need to complete by the 1st December 2025 **

Ground Rent — £TBC
Service Charge - £ TBC
Council Tax — Hammersmith & Fulham — Band TBC

EPC TBC

EPC certificate available on request.

- Brand New Two Bedroom Apartment
- Highly Desirable Chelsea Botanica
- Due For Completion Q3/ Q4 2025
- 863sqft / 80.2sqm
- High Specification
- Ensuite To Master Bedroom
- Peloton Residents Fitness Suite
- 24 Hour Concierge
- Close To Imperial Wharf Station
- Assignment Sale



TWO-BEDROOM APARTMENT

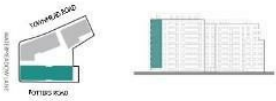
BC.01.15 | BC.02.15 | BC.03.15 | BC.04.15 | BC.05.15 | BC.06.13 | BC.07.14 | BC.08.14 | BC.09.11



TOTAL AREA	80.2 SQ M	863 SQ FT
TOTAL INTERNAL AREA	72.2 SQ M	777 SQ FT
Kitchen / Living / Dining	3383mm x 6566mm	11'1" x 21'7"
Master Bedroom	3773mm x 3820mm	12'5" x 12'6"
Bedroom 2	3230mm x 4484mm	10'7" x 14'9"
TOTAL EXTERNAL AREA	8 SQ M	86 SQ FT
Balcony	1500mm x 4750mm	4'11" x 15'7"



MASTERPLAN ELEVATION



WM Washing Machine FF Fridge Freezer

